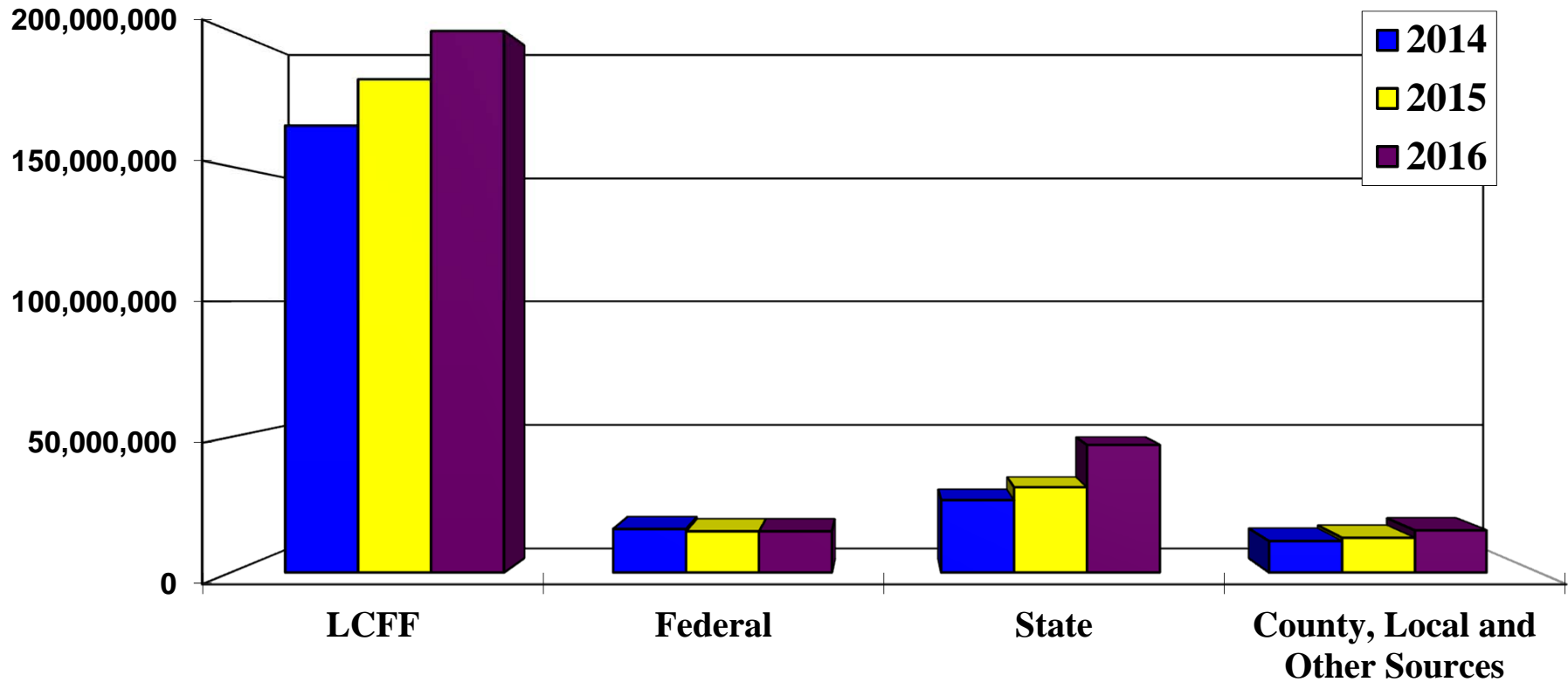


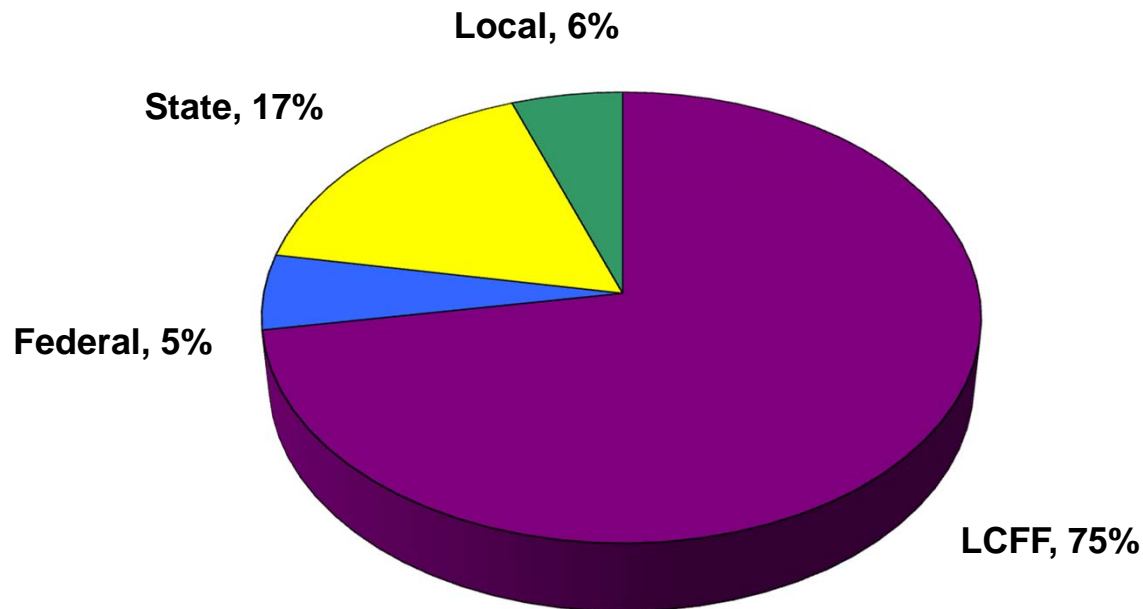
Glendale Unified School District Summary of the Results of the Audit For the Year Ended June 30, 2016

- **District's financial statements are fairly presented in accordance with generally accepted accounting principles**
- **Attendance reports are fairly stated**
- **There were no audit adjustments made to the General Fund or any other fund**
- **District complied with federal and state laws and regulations in all material respects**
- **One current year finding related to state compliance (District already corrected and reflected in unaudited actuals)**
- **No prior year findings**

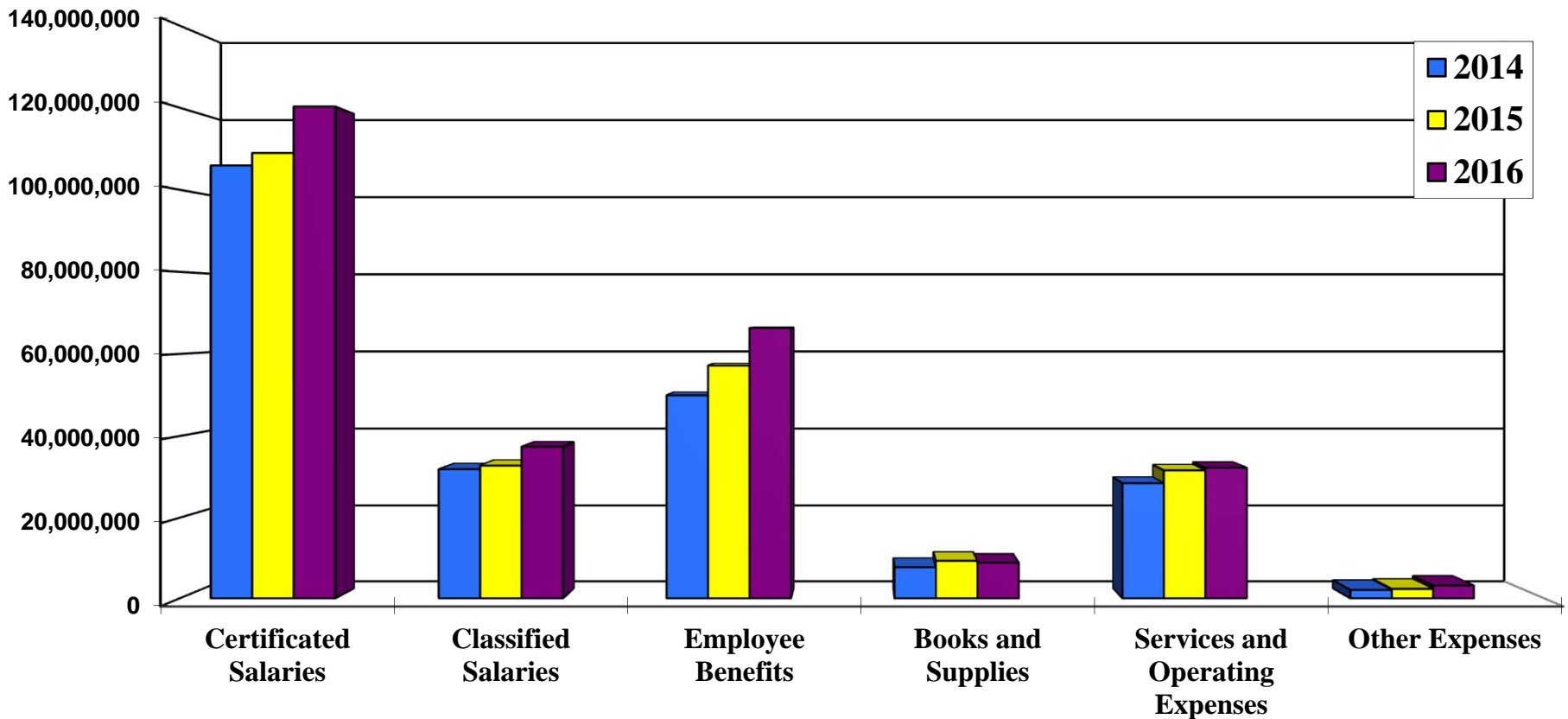
Glendale Unified School District Revenue Trends & Analysis Combined – Restricted and Unrestricted For the Fiscal Year Ended (See page 63)



Glendale Unified School District
Fiscal Year 2015-16
Revenues by Major Object
Combined – Restricted and Unrestricted



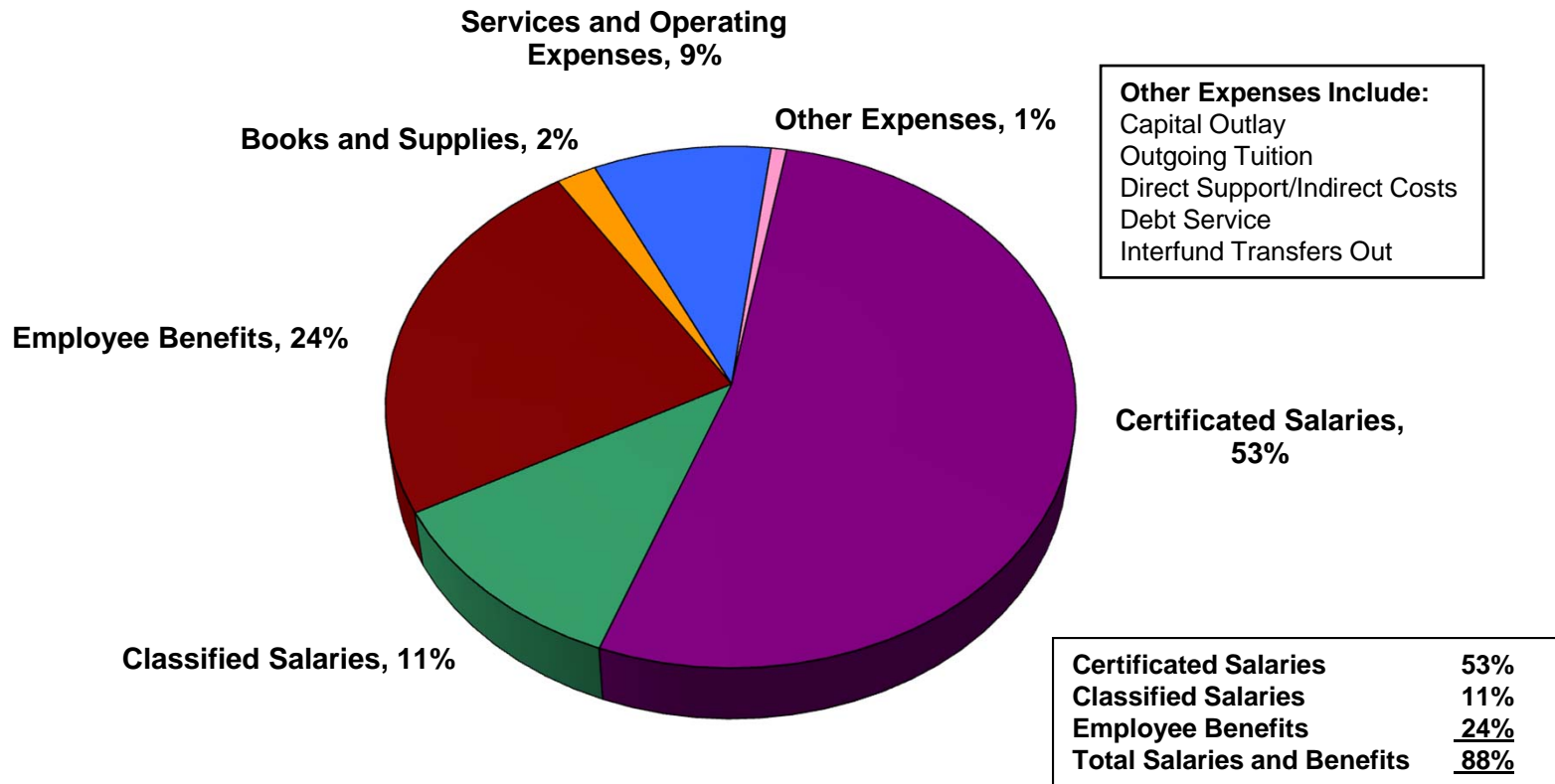
Glendale Unified School District
Expenditure Trends & Analysis
Combined – Restricted and Unrestricted
For the Fiscal Year Ended
(See page 63)



Glendale Unified School District

Fiscal Year 2015-16

Expenditures by Major Object Unrestricted Fund Only



Glendale Unified School District
General Fund Ending Balance – Combined
June 30, 2016
(See Note 6, page 29)

