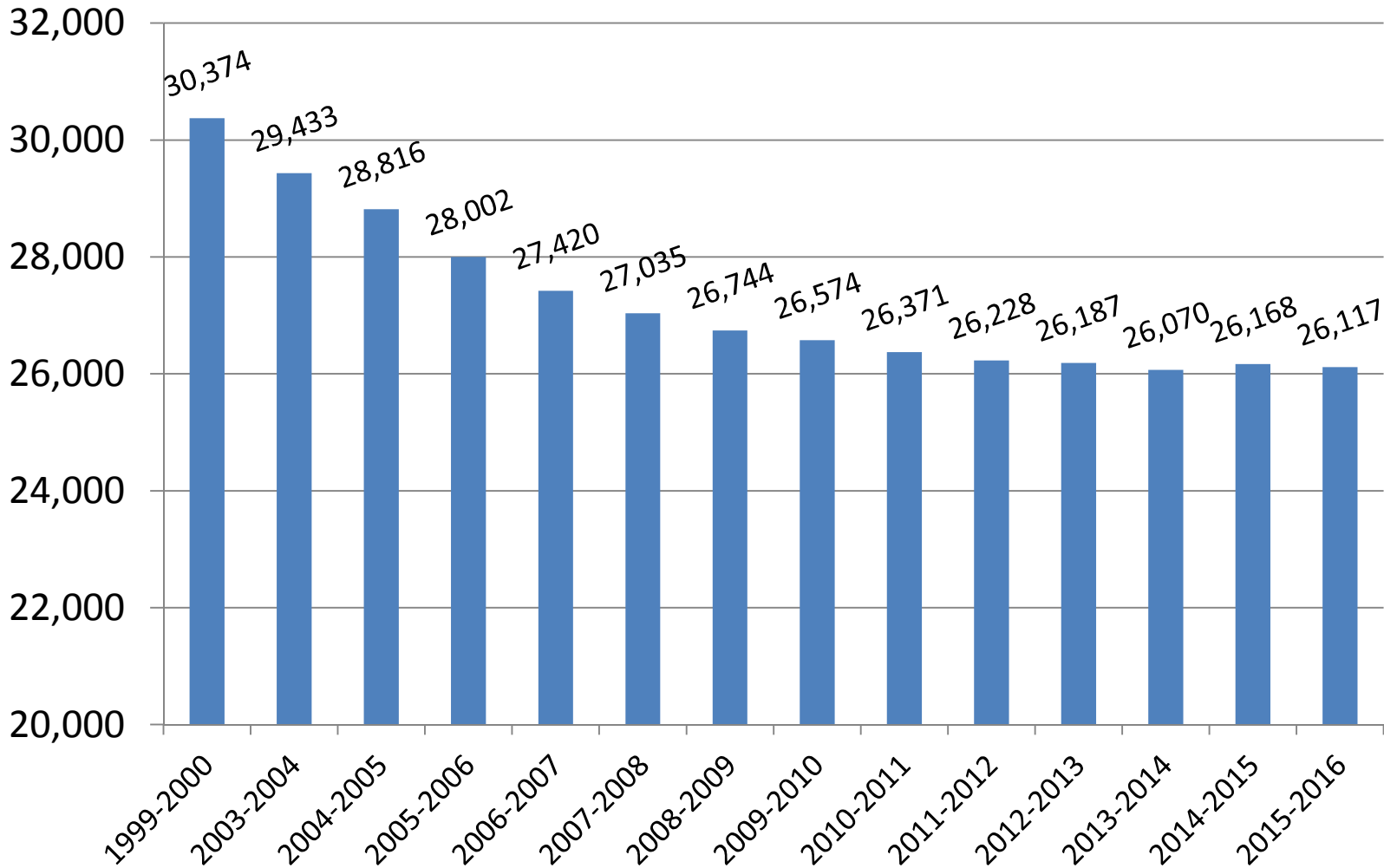




# Glendale Unified School District

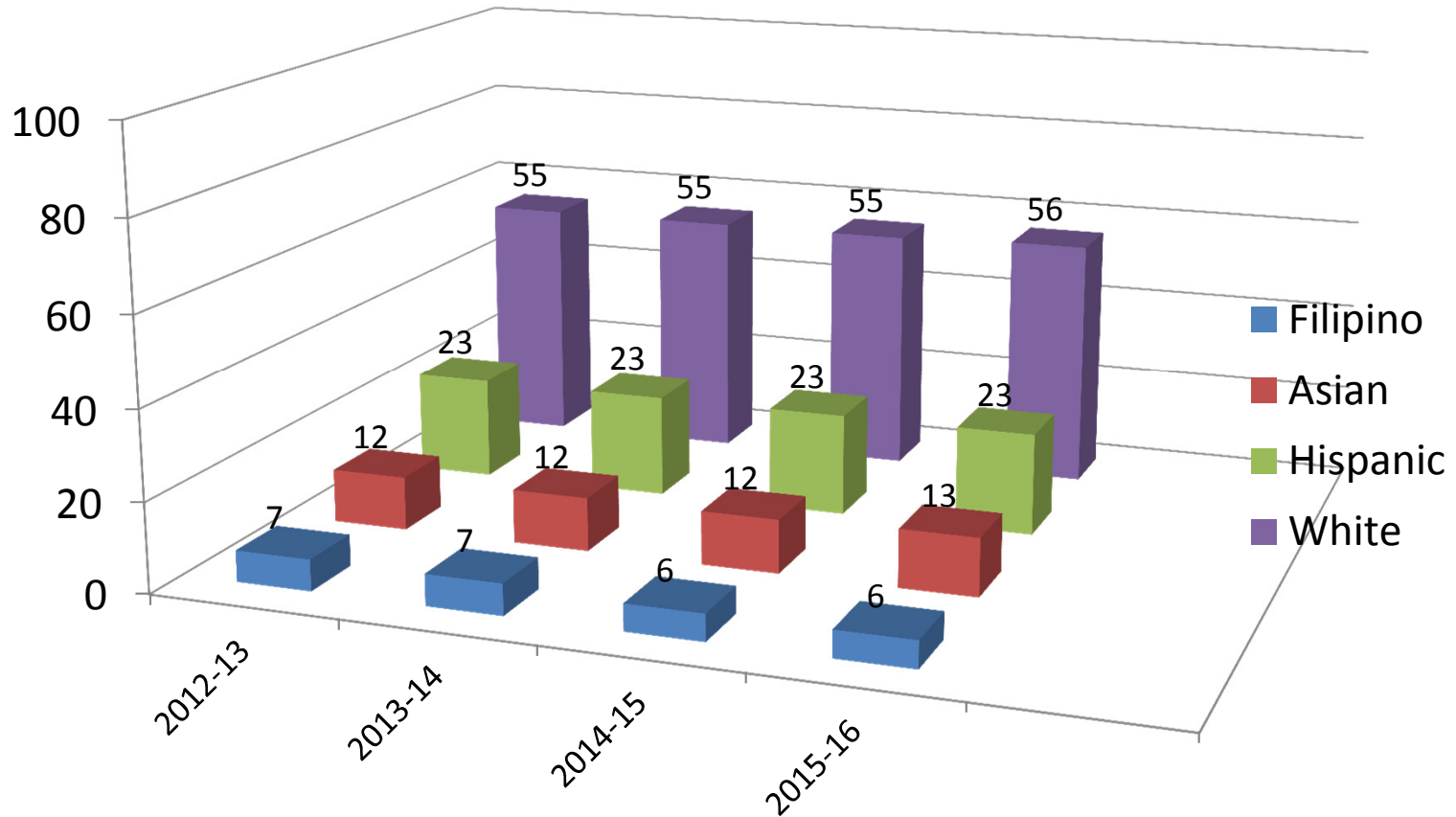
## **District-at-a-Glance** ***Selected Demographics*** ***and Information***

# Enrollment



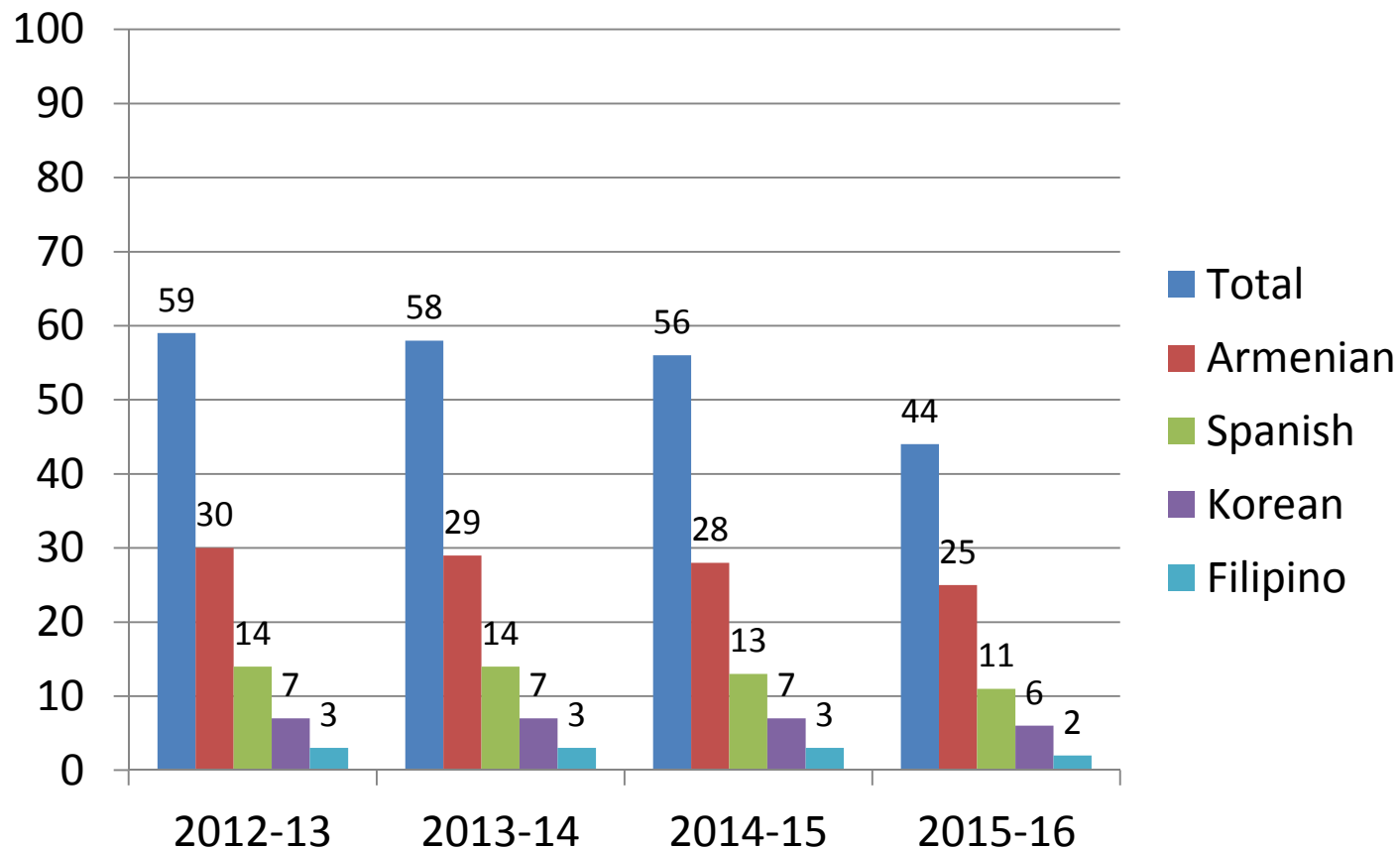
**Declining enrollment in GUSD from 2000 to 2013 had a significant effect on staffing and budget.**

# Ethnic Composition: Percent of the Total GUSD Student Population



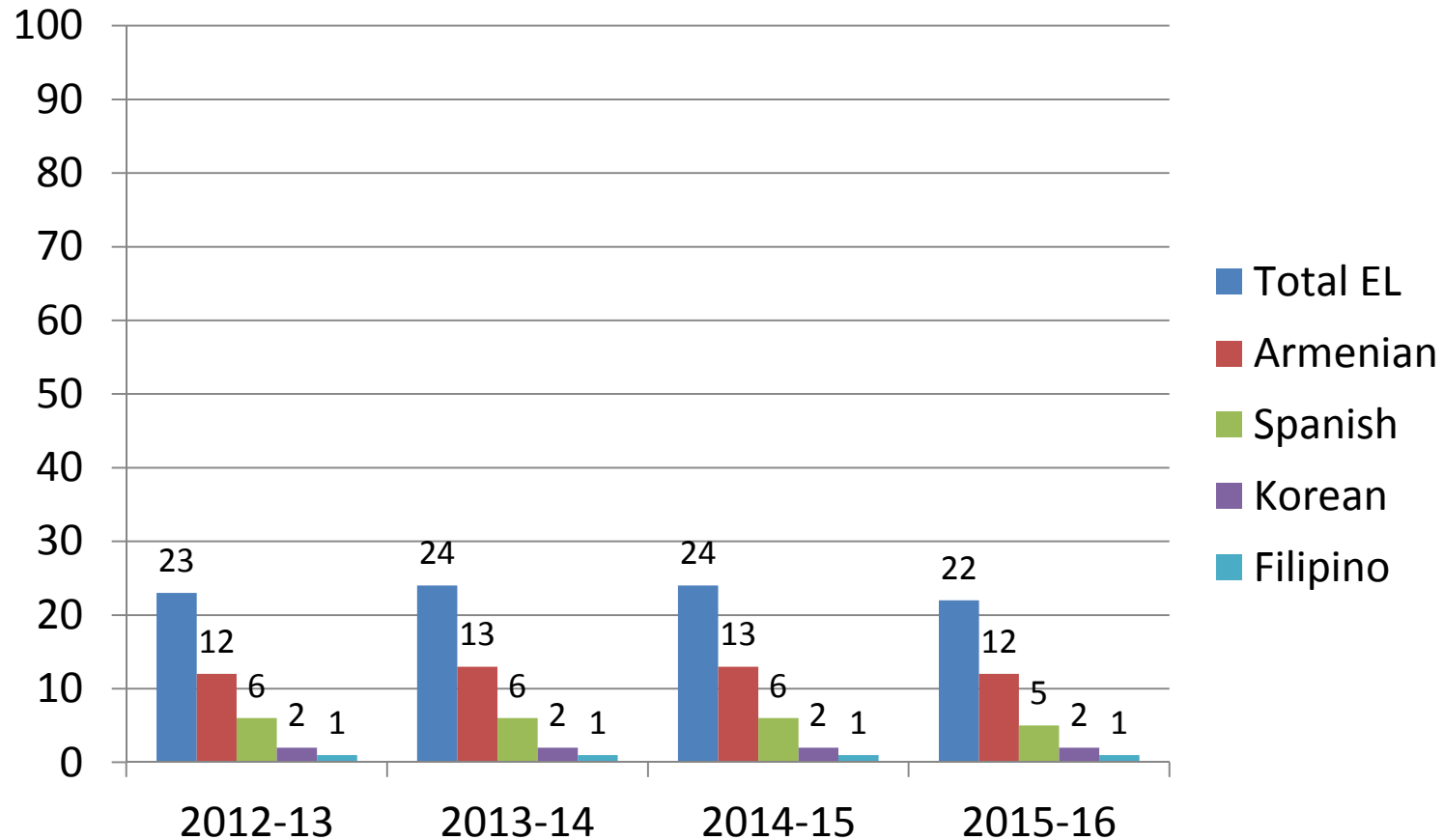
All other groups represent 2% or less of the total student population

# Percent of Students in Total GUSD Population Who Come From a Home Where a Language Other than English is Spoken



**GUSD students come from homes where 44 languages other than English are spoken. Most represent less than 1% of the total GUSD student population.**

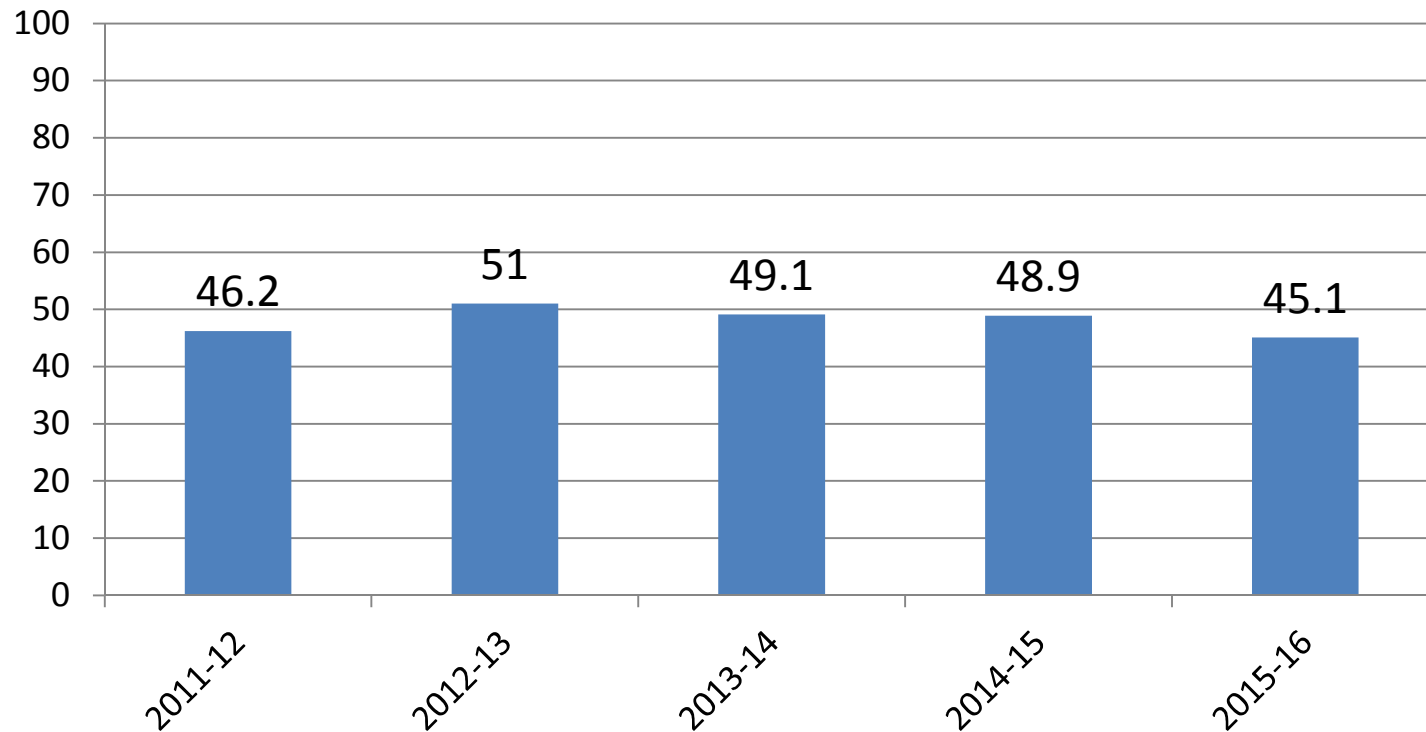
# Percent of English Learners (EL) in Total GUSD Student Population



**English Learners (EL) present one of the biggest instructional challenges in California schools and are included in the formula for Local Control Funding Formula (LCFF) revenue.**

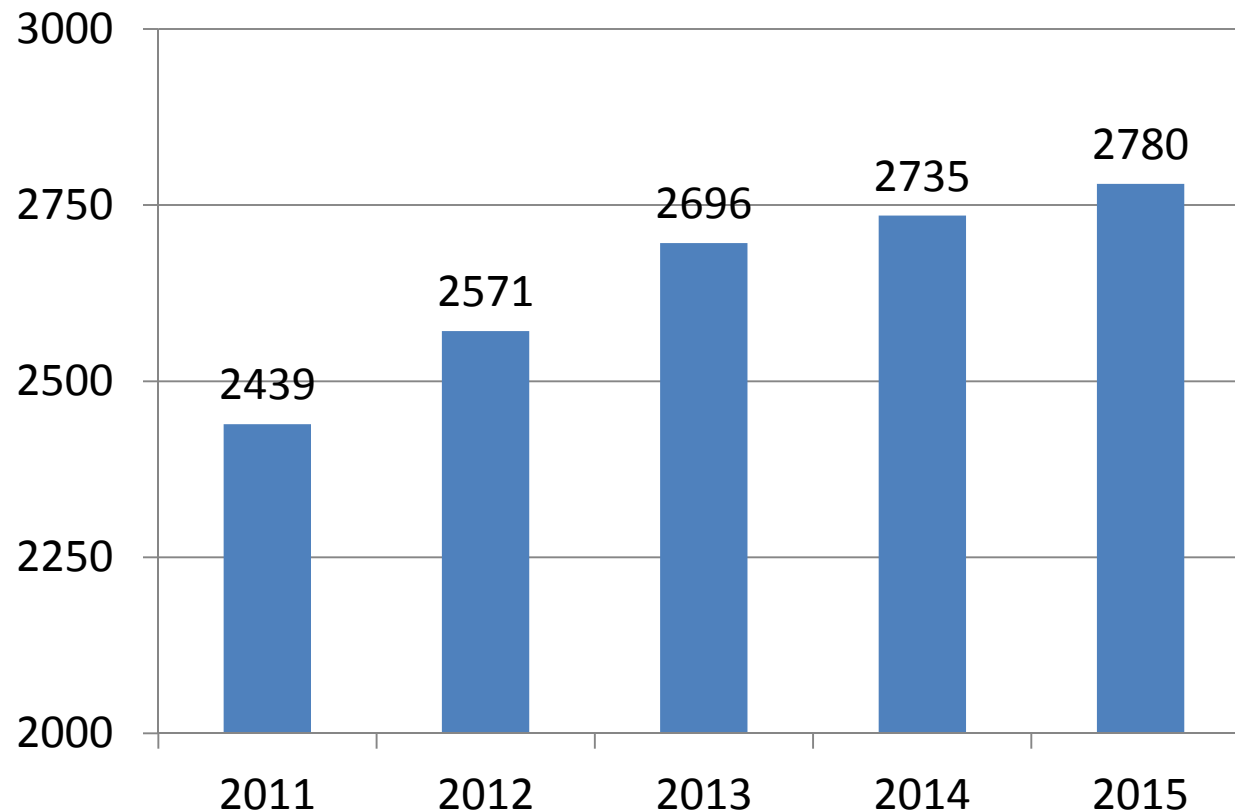
# Low Socio-Economic Status (SES) Students

## Percent of Total Student Population



**Low Socio-economic status (SES) students are identified by participation in the federal free/reduced lunch program. While a declining number is desired because it represents a decline of students living in poverty, it could significantly affect the Local Control Funding Formula (LCFF).**

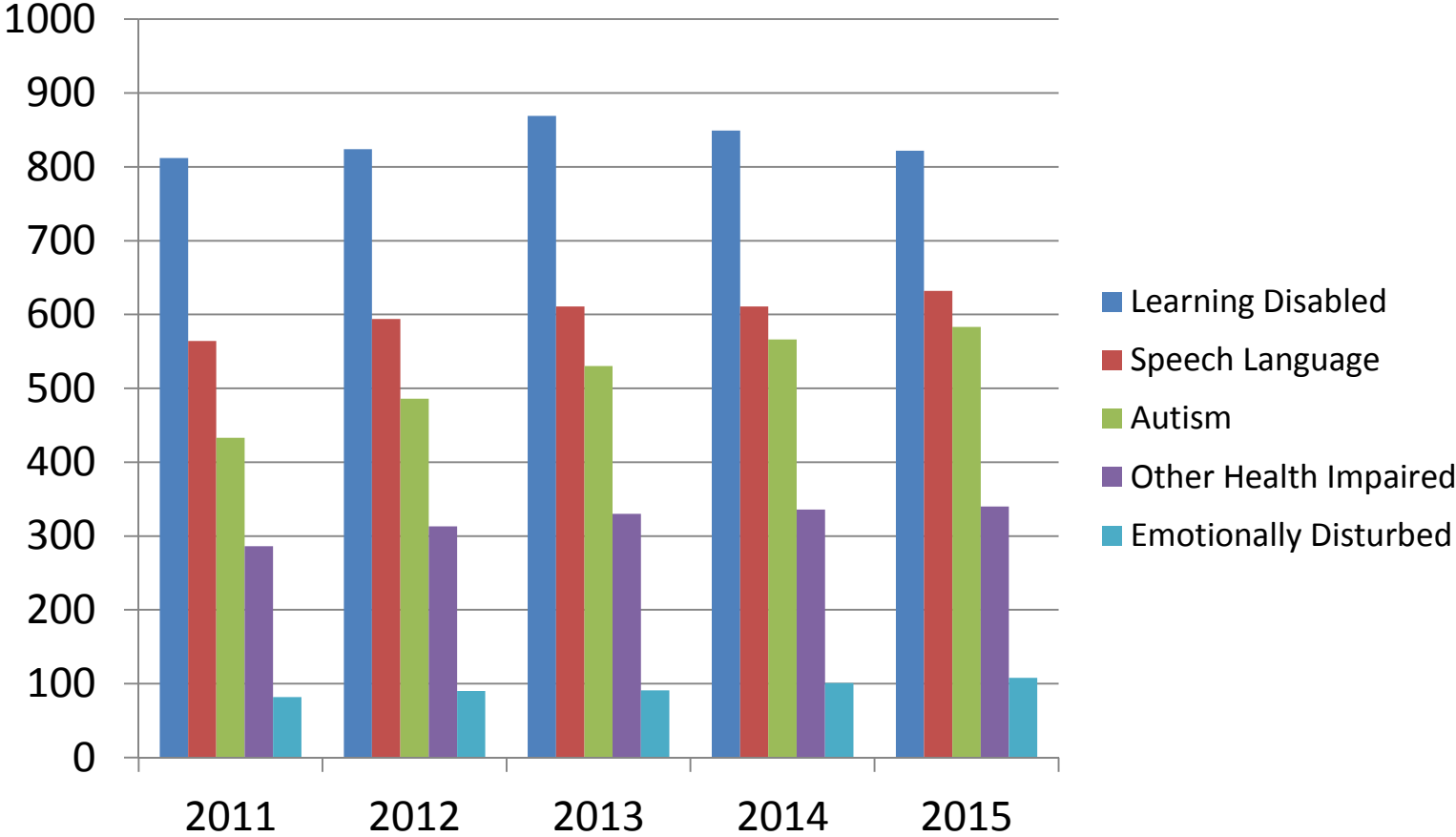
# Special Education (SpEd) Students



Data as of December 1 each year

**The steadily increasing number of identified special education (SpEd) students has a significant impact on instruction, staffing, and expenditures.**

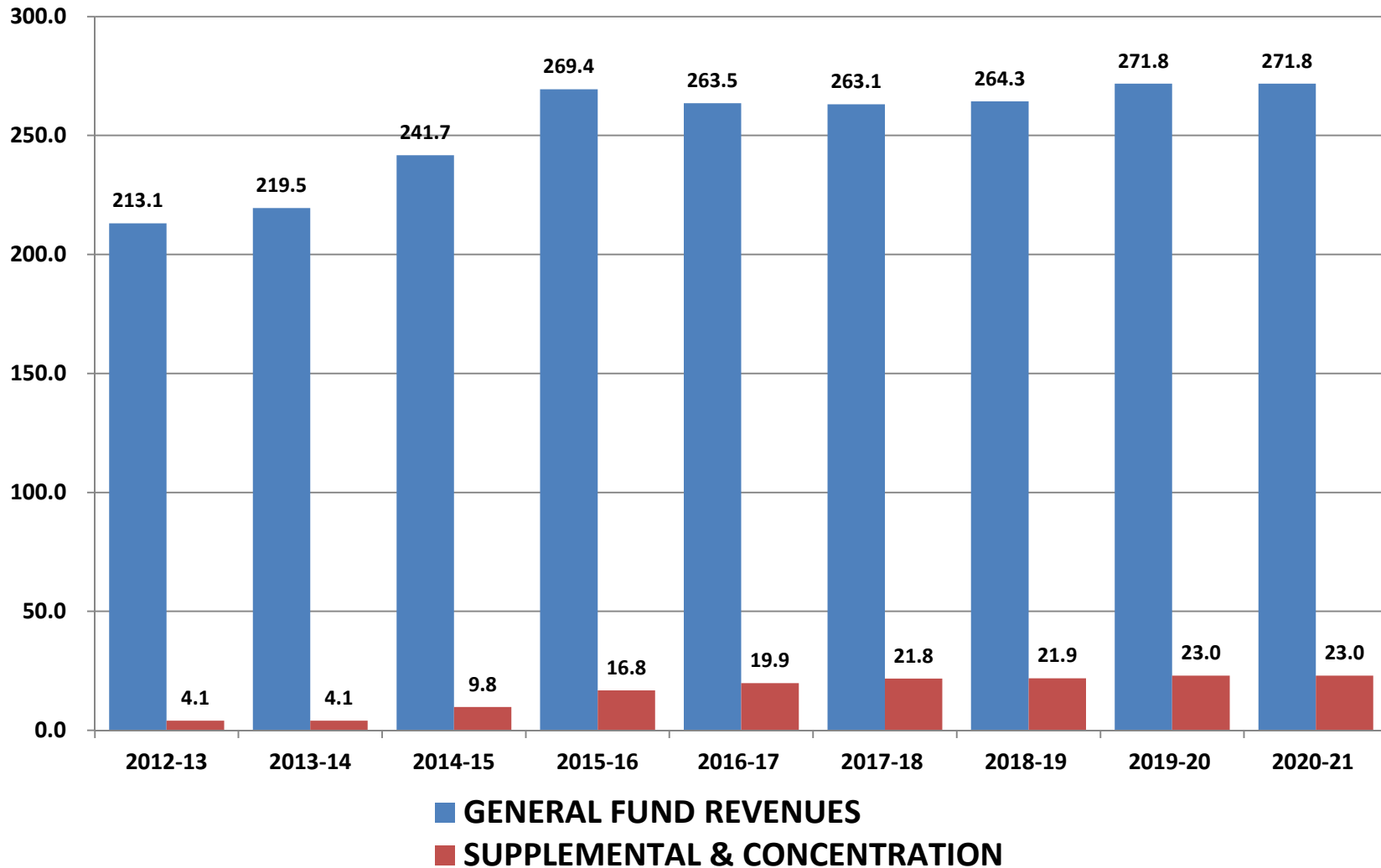
# Trends in Selected Higher Incidence Disabilities of Special Education Students



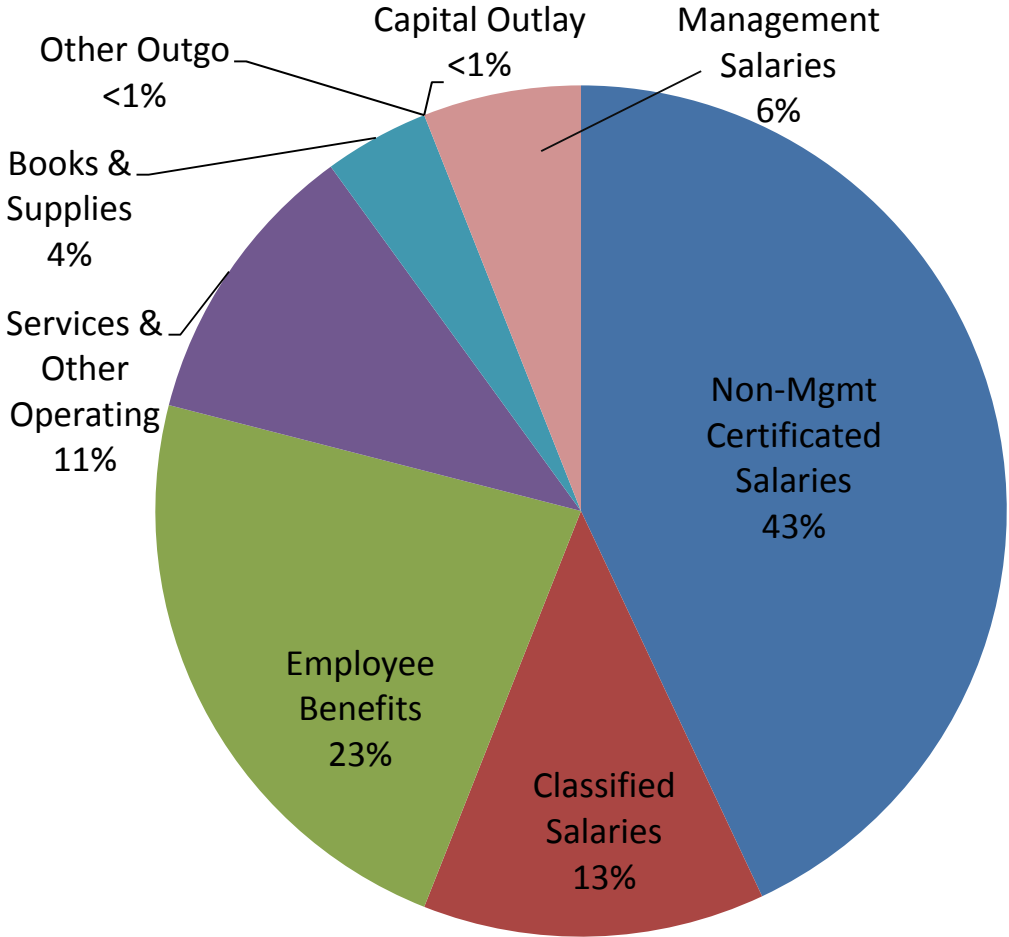
**While most disabilities have been relatively stable over the last five years, autism increases in GUSD mirror the increase in diagnosis across the nation.**



# Total General Fund & Supplemental/Concentration Grant Revenues as of January 2016 (In Million Dollars)



# Total Expenditures, General Fund January 2016



**Total expenditures from the General Fund are \$266,489,483. As with most school districts, over 84% of expenditures in GUSD are represented by payroll costs.**