

## **Cabling Specifications for:**

### **New Administration Building Cabling RFP P-70-17/18**

The information below either addresses specifications NOT covered in Network Cabling Global Specification document or addresses questions raised at bids conference and/or building walk-thru:

Data center racks:

- Provided by GUSD. These will be APC racks as part of the APC Hot Aisle Containment System.

Network switch dimensions:

- [Cisco Catalyst 3750 48-port PoE \(WS-C3750X-48P\)](#)  
(H x W x D) 1.75 in x 17.5 in x 18 in
- [Cisco Catalyst 3850 48-port PoE \(WS-C3850-48P\)](#)  
(H x W x D) 1.75 in x 17.5 in x 17.7 in

IDF cabinets:

- Enclosed 3 foot high wall mounted cabinet required. Specs covered in document Appendix A

CAT 6A Copper patch cables - Quantity and Lengths

- Two (2) patch cables for each data drop
  - At the user end: 15 ft
  - At the IDF end:
    - 50% at 1 ft
    - 50% at 3 ft

Warranty for CAT6A & Certs

- Covered in Network Cabling Global Specification document

Walk thru or info plus contingency

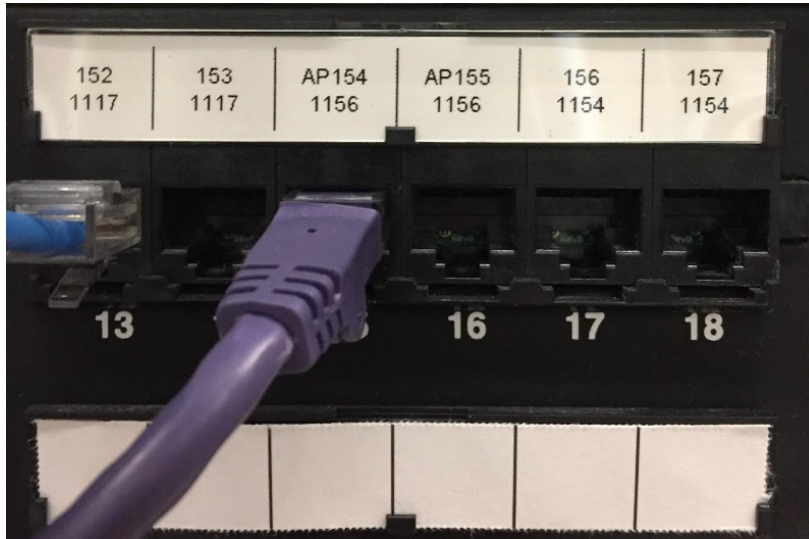
- Mandatory walk-thru scheduled for January 8, 2018 at 10 AM

AP installation

- Two (2) drops for each AP
- Cable specifications covered in Network Cabling Global Specification document

## Patch panel labeling standard

1. When multiple patch panels are installed at the MDF/IDF, port numbering needs to be **continuous** (i.e. Panel 1: 1-48, Panel 2: 49-96, etc.)
2. MDF/IDF patch panel label: [Port#] / [Room#] i.e. 153 / 1117. Ports used for wireless access points (WAPs) need to include "AP" before the port number i.e. AP154. Use two rows as shown in the picture.



3. WAP port label: [MDF/IDF Room#] - [Port#] i.e. 1120-AP154. An additional label with summary info needs to be placed below the drop ceiling making it readily visible to IT staff i.e. 1120-AP 154/155
4. Office wall plate label: [MDF/IDF Room#] - [Port#] i.e. 1120-20 or 1120-102/103.

