



Glendale Unified School District

"Excellence is Worth the Effort"

Monte Vista Elementary School A California Distinguished School

2001-2002 Annual School Report Card

2620 Orange Ave., La Crescenta, CA 91214-2199

(818) 248-2617

Kindergarten through Sixth Grade

www.glendale.k12.ca.us

School Administration

Sharon Popolo, Principal
Carla Walker, Assistant Principal

2001-02 Board of Education

Chakib Sambar, President
Pam Ellis, Vice-President
Greg Krikorian, Clerk
Lina Harper, Member
Mary Boger, Member

District Administration

James R. Brown
Superintendent

Dr. Mary M^cKee
Assistant Superintendent
Crescenta Valley Cluster

Contents

- Principal's Message
- Community & School Profile
- Discipline & Climate for Learning
- School Enrollment & Attendance
- Class Size
- Instructional Time
- Textbooks & Instructional Materials
- Student Achievement & Testing
- Academic Performance Index
- School Facilities & Safety
- Counseling & Other Support Services
- Teacher Assignment
- Teacher Evaluation
- Substitute Teachers
- Training & Curriculum Development
- Specialized Instruction
- School Leadership
- Expenditures & Services Funded
- Salary & Budget Comparison
- Contact Information

Principal's Message

As principal of Monte Vista Elementary School, I take great pride in the achievement of the teachers, children, and community. The annual School Accountability Report Card, in accordance with Proposition 98, provides the data contained within these pages to inform the public about our school.

"At Monte Vista, We Support Excellence." Our motto is proudly displayed at school, in our classrooms, and on license plate frames throughout our community. This motto is a visual reinforcement of our school's mission, which is:

"At Monte Vista Elementary School, parents, staff, and students support high expectations for excellence in a safe and nurturing environment while ensuring all students succeed academically and socially in a diverse society."

Monte Vista Elementary School proudly presents standards-based assessment data to the school community. We focus on our present performance in relation to previous results and future endeavors. Results are the key to academic excellence!

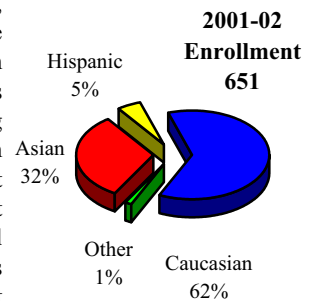
Students' success is the responsibility of our entire school community. We work together to provide children opportunities to become high functioning, contributing members of society. It is because of this cohesiveness, we have been able to develop a successful educational experience that celebrates and promotes cultural diversity, character and ethics, patriotism, and educational excellence in a beautiful and safe environment.

Community & School Profile

The City of Glendale, the third largest city in Los Angeles County, is situated on the eastern border of the San Fernando Valley at the base of the Verdugo Mountains - only 8 miles north of downtown Los Angeles. Embracing cultural diversity, 50 percent of the city's 200,000 residents were born outside the United States, challenging local educational agencies to offer and support over 60 foreign languages. National studies, residents, and realtors concur that Glendale's reputation for picturesque neighborhoods, excellent schools, commercial industries, shopping facilities, strong municipal agencies, and its multitude of local attractions are motivating factors to families moving to the valley. Community pride and involvement are strong forces responding to educational issues, non-profit causes, and city developments.

Glendale has become one of the largest financial, commercial, retail, and motion picture animation centers, featuring many large corporations such as Nestlé USA, Walt Disney Imagineering, Walt Disney Stores, DreamWorks SKG, International House of Pancakes, Cigna Healthcare, KABC-TV and Warner Bros. Animation. The quaint downtown area of the city is unique for its social environment, beautiful landscaping, and dramatic towering office buildings.

The Glendale Unified School District is proud of its excellent quality of education and award winning schools. Its commitment to providing safe and effective learning environments for students is unmatched. The district serves approximately 30,000 students in its 20 elementary schools, four middle schools, five high schools, and two special schools. Year-round and traditional calendar systems, complimented by



a variety of creative programs, provide Glendale parents and students many choices for individual needs and achievements.

The Monte Vista Elementary School community is located in the northern part of the city of La Crescenta, serving over 650 kindergarten through sixth grade students. As a California Distinguished School, Monte Vista Elementary School teachers and staff are committed to providing a safe and productive learning experience. Operating on a traditional calendar system, the educational programs are designed to provide the skills and tools necessary for students to explore their creativity while developing a strong educational base.



Discipline & Climate for Learning

Students at Monte Vista Elementary School are guided by specific rules and classroom expectations that promote respect, cooperation, courtesy, and acceptance of others. The school's discipline philosophy promotes a safe school, and a warm, friendly classroom environment. We believe that good discipline is a solid foundation on which to build an effective school. The goal of Monte Vista Elementary School's discipline program is to provide students with opportunities to learn self-discipline through a system of consistent rewards and consequences for their behavior. Parents and students are informed of discipline policies at the beginning of each school year through classroom orientation and individual student handbooks.

The district annually provides a Student Conduct Code for each of its sites which is supplemented by a set of behavioral standards developed by Monte Vista Elementary School. The program's design establishes guidelines to provide students with a meaningful, productive, and enjoyable school experience. Appropriate behavior is encouraged through praise and motivational incentives, as well as assertive discipline and conflict resolution tools to further develop personal growth.

Building a positive self-image, as well as respect for others, is important to a student's success. Glendale Unified School District supports the philosophy that students who have high self-esteem are more likely to become productive citizens and resist temptations such as abusing alcohol and dangerous drugs. The district participates in the Glendale Character and Ethics Project, a character education program that provides a strong link between the schools and the community. The project highlights one "guiding word" per month, including respect, honesty, self-discipline, citizenship, and responsibility. Glendale Character and Ethics teaches children to consider the consequences of their actions, encouraging them to choose behaviors that benefit themselves and others.

Certificates, ribbons, prizes, and various other awards are given to students at assemblies and special presentations throughout the school year. Activities, honors, and programs include:

- Student of the Month
- Principal Pal
- Commemorative Dog Tags
- Reflections
- CA Governor's Reading Award
- Monty's Masters Orchestra
- Monty Stars
- Turkey Bowl
- Spelling Bee
- Geography Bee
- Beautification Award

Special recognition is given for specific accomplishments and levels of achievement:

- Presidential Physical Fitness Award
- Presidential Academic Achievement Award
- Honors Orchestra

Monte Vista Elementary School has not expelled any of its students during the past three years; expulsions occur only when required by law or when all other alternatives are exhausted.

	Suspensions and Expulsions					
	Monte Vista			GUSD		
	00	01	02	00	01	02
Suspensions (#)	23	31	17	4,444	3,647	3,425
Suspensions (%)	3.90	4.76	2.61	14.63	12.03	11.30
Expulsions (#)	0	0	0	40	47	40
Expulsions (%)	0.00	0.00	0.00	0.13	0.16	0.13

Enrichment Activities

Students are encouraged to participate in the school's additional academic and extracurricular activities that are an integral part of the educational program. These schoolwide and classroom incentives promote positive attitudes, encourage achievement, and aid in the prevention of behavioral problems. Activities, clubs, and programs include:

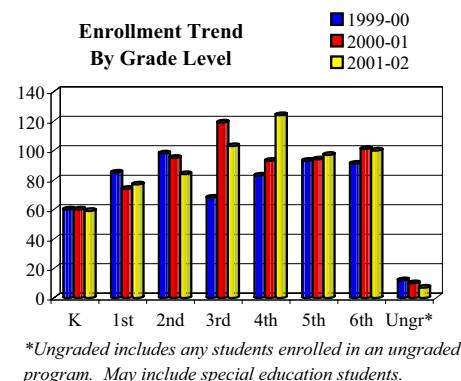
- Math Club
- Library Clubs
- Geo Games
- Science Fair/Art Fair
- Chorus
- Soccer
- Armenian Club
- Orchestra
- Student Council
- Drama
- Basketball

Homework

Monte Vista Elementary School staff feels homework is a fundamental part of the learning process that helps to develop basic academic and study skills, as well as promote student responsibility and self-discipline. Homework is assigned on a regular basis for all grade levels and major subject areas. Each teacher determines the appropriate measure of homework for his or her students. Students are expected to complete their homework assignments in a timely manner and to the best of their ability. Parents are encouraged to provide a supportive environment for homework activities and to review homework assignments with their child.

School Enrollment & Attendance

Student enrollment over the past three years at Monte Vista Elementary School has increased by 10.3%. Schoolwide enrollment at the beginning of the 2001-02 school year was 651 students. Monte Vista Elementary School is a school of choice and accepts students from neighboring districts provided space is available and class sizes do not exceed the school's capacity.



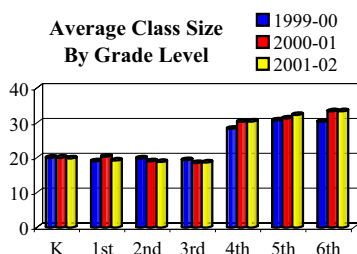
Regular attendance at Monte Vista Elementary School is a necessary part of the learning process and is critical to academic success. Attendance, tardy, and truancy policies are clearly stated, consistently

enforced, and consequences fairly administered. Parents are advised of their responsibilities, including proper notification of why and when students are absent. Independent study is available for students who require extended leaves from school. School districts receive financial support from the state for the education of the students they serve based on how many students attend school each day. Student attendance is carefully monitored to identify those students exhibiting excessive absences. During the 2001-02 school year, the actual attendance rate for all grade levels for Monte Vista Elementary School was 97.30%.

Glendale Unified School District's School Attendance Review Board (SARB) is composed of parents, representatives from the school district, and members of the community, including representatives from law enforcement, welfare, probation, and mental health agencies. Students are referred to SARB when they have persistent attendance and behavior problems in school, and when the normal avenues of classroom, school, and district counseling are not effective. The members of the SARB, and the referred students, and their parents or guardians meet regularly to evaluate the student's situation and recommend alternative solutions to alleviate circumstances that may contribute to specific truancy, attendance, or behavior problems.

Class Size

Monte Vista Elementary School maintained a schoolwide average class size of 23 students and a student/teacher ratio of 22:1 for the 2001-02 school year. The ratio of students per teacher varies by grade level.



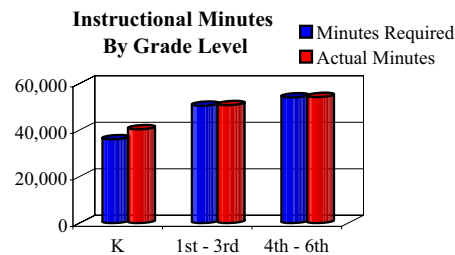
In 1996, state legislature approved implementation of the Class Size Reduction (CSR) program that provides funding to hire additional teachers to assist schools in reducing K-3 class sizes. At the beginning of the 2001-02 school year, 100% of all K-3 classrooms participated in this program.

	1-20			21-30			31+		
	00	01	02	00	01	02	00	01	02
K	3	2	4	0	1	0	0	0	0
1st	4	2	4	0	1	0	0	0	0
2nd	4	4	4	0	0	0	0	0	0
3rd	3	6	5	0	0	0	0	0	0
4th	0	0	0	3	2	5	0	0	0
5th	0	0	0	1	1	2	2	1	1
6th	0	0	0	2	0	0	1	2	3
K-3	2	2	1	0	0	0	0	3	0
Combo 4-8	1	1	1	0	0	0	0	0	0

Instructional Time

During the 2001-02 school year, all instructional time offered at Monte Vista Elementary School either met or exceeded state requirements. Monte Vista Elementary School provides instruction for kindergarten through sixth grade in a self-contained classroom environment, as well as cross-instruction within grade levels.

For the 2001-02 school year, Monte Vista Elementary School offered 180 days of instruction comprised of 175 regular days and 5 minimum



days. Minimum days are used for Back-to-School Night, Open House, the last day of school and parent conferences. Each Wednesday is a "Banking Day." Students are dismissed from school one hour earlier in the afternoon. The "Banking Days" allow teachers additional time to meet once by grade level, and once for a full faculty meeting. The other two "Banking Days" each month are used for staff development or classroom planning.

Textbooks & Instructional Materials

Monte Vista Elementary School sets a high priority upon ensuring that sufficient and current textbooks and materials are available to support the school's instructional program, as well as provide students with their own textbooks. All textbooks and instructional materials used within the school are aligned with the California State Content Standards and Frameworks. Glendale Unified School District follows the State Instructional Materials Adoption Cycle, which reviews instructional materials in each curricular area within a seven-year cycle.

Subject/ Year Adopted Series	Grades
Language Arts 1998 Harcourt Brace: <i>Signatures</i>	K-6
Mathematics 1997 Everyday Learning Corp.: <i>Everyday Mathematics</i>	K-6
History/Social Studies 2000 McGraw Hill: <i>Adventures in Time and Place</i>	K-6
Science 2000 Holt, Rinehart & Winston: <i>Earth Science</i>	6
2001 Harcourt Brace: <i>Harcourt Science</i>	K-5

Each textbook is formally adopted by the Board of Education following a comprehensive review process. A committee consisting of administrators and teachers establishes selection criteria based on state standards, reviews instructional materials on the state list, and makes recommendations to the Board of Education for final adoption.

The school's library is stocked with thousands of books that are available for students to check out. The school's library contains a large collection of videos and audio tapes for classroom use that tie into curricular areas of study.

The school's computer lab, containing 34 computers, allows teachers to integrate technology into all aspects of curriculum. Software includes programs to develop critical thinking skills, technological skills, and mathematical proficiency.

	1999-00	2000-01	2001-02
Computers	74	89	122
Students per computer	8.0	7.3	5.3
Classrooms connected to Internet	0	29	30

Student Achievement & Testing

Various measures of student achievement are used as an ongoing part of the quality instructional program at Monte Vista Elementary School. These assessments are used to measure student progress and evaluate the effectiveness of the instructional program.

In addition to the academic measurements given by the State of California, the school and the district provide other assessments to determine the progress of each individual student. Students in grades K-6 are evaluated based on the results of Writing and Math Benchmark tests administered each trimester and their report card grades in Reading, Writing, and Math. Kindergartners also participate in a district-developed kindergarten inventory. Students in grades 2-6 are evaluated on state standardized tests, trimester Reading tests, Writing and Math Benchmark tests, and report card grades in Reading, Writing and Math. Annually, the district evaluates results on these assessments to determine whether each student is meeting the district's grade level standards.

Math & Writing Benchmark				
% of Students At or Above Proficiency Level				
2001-2002				
	Math		Writing	
	01	02	01	02
K	98	95	77	54
1st	96	89	61	63
2nd	99	96	63	70
3rd	89	97	76	77
4th	76	84	50	67
5th	64	61	60	76
6th	46	75	60	73

Meeting Grade Level Standards					
% of Students At or Above Proficiency Level					
Language Arts			Math		
00	01	02	00	01	02
85	82	90	84	84	90

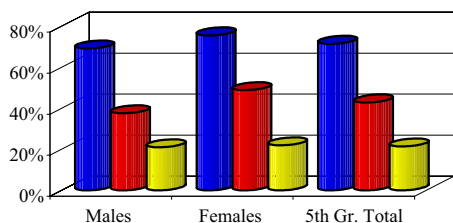
Standardized State Testing

Monte Vista Elementary School participates in California's mandatory Standardized Testing and Reporting Program (STAR) which utilizes the Stanford Achievement Test Series (SAT-9), California Standards Test, and the Spanish Assessment of Basic Education (SABE). The SAT-9 measures achievement based on student comparison; the California Standards Tests aid in determining the level of individual student comprehension and knowledge of skills required by the California Content Standards for each grade or course.

Physical Fitness

In the spring of each year, Monte Vista Elementary School is required by the state to administer a physical fitness test to all students in fifth grade. The physical fitness test measures each student's ability to perform fitness tasks in six major areas. Students who either meet or exceed the standards in all six fitness areas are considered to be physically fit or in the 'healthy fitness zone' (HFZ).

Students In Healthy Fitness Zone
Spring 2001



Academic Performance Index

The Academic Performance Index (API) is one of three components of the Public Schools Accountability Act (PSAA) passed in 1999. The API measures school performance, sets academic growth targets, and monitors growth over time. If a school meets its growth targets, including subgroup targets, it may be eligible to receive monetary and non-monetary awards.

The API Scale is 200-1000; calculations only include scores for students in the district the prior school year. Rankings are presented in deciles (high of 10, low of 1), each of which contains 10% of all schools. The growth target is equal to 5% of the difference between the current API and the interim Statewide Performance Target of 800.

SAT-9 Results															
All Students															
2000, 2001, 2002															
% At or Above National Average															
Grade	Reading														
	2			3			4			5			6		
	00	01	02	00	01	02	00	01	02	00	01	02	00	01	02
Year Ending															
Monte Vista Elem.	83	87	83	84	78	84	77	78	83	70	84	75	84	70	83
Glendale USD	54	58	58	50	51	56	50	53	54	46	51	52	55	53	57
California	49	51	54	44	46	47	45	47	49	44	45	47	46	47	48
	Math														
Monte Vista Elem.	87	88	87	84	83	92	88	84	89	78	78	85	91	86	89
Glendale USD	68	68	70	64	63	73	63	65	69	61	64	68	70	71	73
California	57	58	62	56	59	62	51	54	58	50	55	57	55	58	60
	Language														
Monte Vista Elem.	83	86	88	81	80	90	90	76	91	82	81	84	89	81	88
Glendale USD	62	67	63	58	58	62	62	65	55	61	63	59	67	67	58
California	52	53	56	48	51	54	51	54	49	50	53	52	52	54	49
	Spelling														
Monte Vista Elem.	77	82	86	78	81	81	63	72	76	67	74	77	78	67	78
Glendale USD	58	62	63	54	57	62	51	55	55	50	55	59	54	52	58
California	50	52	56	46	51	54	43	46	49	45	49	52	44	46	49

SAT-9 Disaggregated Results																				
2001, 2002																				
% At or Above National Average																				
	Reading										Math									
	2		3		4		5		6		2		3		4		5		6	
	01	02	01	02	01	02	01	02	01	02	01	02	01	02	01	02	01	02	01	02
Gender																				
Male	85	75	74	77	67	80	82	61	73	84	80	88	80	90	80	82	87	84	87	88
Female	90	90	82	90	90	85	86	90	66	82	96	86	86	95	88	94	69	88	85	90
Ethnicity																				
Asian	96	71	73	81	78	99	88	96	94	91										
Caucasian	85	84	82	88	68	85	81	82	75	85										
Language Fluency																				
English Learners (EL)	89	70	44	62	58	40	33	20	83	90	67	100	86	75	81	67				
Non EL	87	87	88	89	83	89	89	82	78	86	89	86	88	91	83	91	78	86	90	90
Socioeconomic Status																				
SED											64									
Non SED	87	83	78	84	78	83	86	77	71	83	88	87	83	92	84	89	80	85	87	89
Migrant Education	data currently unavailable																			
<i>SED = Socioeconomically Disadvantaged</i>																				
<i>Only numerically significant subgroups are required to be presented in this report card. In some instances, no students who met specific subgroup criteria were tested.</i>																				
<i>Ethnicity data is currently unavailable</i>																				

**California Standards Test Results
All Students
2001, 2002**

	English/Language Arts										Math										
	2		3		4		5		6		2		3		4		5		6		
	01	02	01	02	01	02	01	02	01	02	02	02	02	02	02	02	02	02	02	02	
All Students:																					
Monte Vista Elem.	68	61	61	72	70	73	53	61	61	62	77	82	70	71	73						
Glendale USD	38	38	36	42	39	44	35	37	39	42	51	50	50	48	53						
California	32	32	30	34	33	36	28	31	31	31	43	38	38	29	32						
Gender																					
Male	57	53	57	62	53	66	52	48	61	56	81	77	65	66	76						
Female	79	70	63	79	87	78	55	75	63	68	75	84	75	75	68						
Ethnicity	data currently unavailable																				
Language Fluency																					
English Learners (EL)	55	50	33	57	47	22		27	20		91	81	42	57							
Non EL	71	65	69	76	76	81	58	67	69	65	74	81	75	73	73						
Migrant Education	data currently unavailable																				
Socioeconomic Status																					
SED																					
Non SED	68	60	61	72	80	74	55	63	64	63	77	80	72	70	74						

SED = Socioeconomically Disadvantaged
Only numerically significant subgroups are required to be presented in this report card.
In some instances, no students who met specific subgroup criteria were tested.

API School Results

Base	Base			Growth	Growth	
	1999	2000	2001		99-00	00-01
Percent Tested	100	100	100	Percent Tested	100	100
API Score	834	856	849	API Growth Score	856	858
Growth Target	*	*	*	Actual Growth	22	2
Statewide Rank	10	10	10	Eligible for Awards	Yes	No
Similar Schools Rank	4	8	3	Eligible for II/USP	No	No

API Subgroup Results

Asian-American

Base API Score	913	929	897	API Growth Score	929	911
Growth Target	*	*	*	Actual Growth	16	-18

Caucasian

Base API Score	810	836	840	API Growth Score	836	847
Growth Target	*	*	*	Actual Growth	26	11

*The school scored at or above the interim Statewide Performance Target of 800.

Only numerically significant subgroups for each reporting period are required to be presented in this report card. Numerically significant subgroups are comprised of (1) at least 100 students with valid test scores or (2) at least 15% of the school population tested and contains at least 30 students with valid scores.

The Immediate Intervention/Underperforming Schools Program and the Governor's Performance Award Program are the remaining two components of the PSAA. Due to specific criteria, including API and SAT-9 results, Monte Vista Elementary qualified to participate in the 1999-00 Governor's Performance Award program, receiving \$39,234 for schoolwide use.



School Facilities & Safety

Monte Vista Elementary School provides a safe, clean environment for students, staff, and volunteers. The campus includes 31 classrooms, a music room, a library, a computer lab, a cafeteria, administrative offices, a lunch shelter, grassy fields and blacktop playground. Facilities encompass more than 57,000 square feet on the 7.09-acre site. School facilities, which are up-to-date, provide adequate space for students and staff. A team of three custodians, working daytime and evening shifts, ensures classrooms, restrooms, and campus

grounds are kept clean and safe. A scheduled maintenance program is administered by the Glendale Unified School District to see all classrooms and facilities are maintained to a high standard.

Measure K funds have provided the following improvements at Monte Vista Elementary School:

- Ceiling, lighting, and electrical upgrades
- Heating and air conditioning upgrades
- Computer networking and wiring for Internet access

Further renovations, including increasing handicap accessibility, are scheduled to begin in July 2003.

Monte Vista Elementary School is a closed campus. All visitors are required to sign-in at the school's office and to wear visitor badges during their stay. While the school welcomes visits by parents and community members, anyone wishing to be on campus during school hours should notify school staff ahead of time. Visits are restricted at certain times of the year to minimize classroom disruption during activities such as SAT-9 testing. Before and after school and during lunch, teachers, administrators, noon yard supervisors, and parent volunteers monitor campus activity and ensure student safety.

A Comprehensive School Safety Plan was developed by the school staff in order to comply with Senate Bill 187 of 1997. The plan provides students and staff a means to ensure a safe and orderly learning environment. Components of the Comprehensive School Safety Plan include the following:

- Child abuse reporting procedures
- Teacher notification of dangerous pupils procedures
- Disaster response procedures
- Procedures for safe entering to, and exiting from, school
- Sexual harassment policy
- Suspension and expulsion policies
- Dress code
- Discipline policies

School and district personnel evaluate the plan annually and update the plan as needed. The plan was updated and submitted for Board approval in the spring of 2002 and reviewed with school staff at the beginning of the 2002-03 school year. A copy of the Plan is available to the public at the district office.

Counseling & Other Support Services

It is the goal of Monte Vista Elementary School to develop students in their social and personal behaviors, as well as academically. The district provides special attention for students who experience achievement problems, have difficulty coping with personal and family problems, experience trouble with decision-making, or handling peer pressure. The principal coordinates the counseling and support services.

	Number of Staff		Availability Days Per Week
	FTE		
Health Aide	1	1	5
Nurse	1	0.2	1
Psychologist	1	0.3	1 1/2
Special Education Teacher	2	1	5
Speech/Language Specialist	1	0.8	4

*FTE = Full-Time Equivalent

Teacher Assignment

Glendale Unified School District recruits and employs the most qualified credentialed teachers. For the 2001-02 school year, Monte Vista Elementary School had 30 fully credentialed teachers who met all credential requirements in accordance with State of California guidelines.

Teacher Credential Status			
	1999-00	2000-01	2001-02
Fully Credentialed	26	28	30
Emergency Permits	1	0	0
Without Credentials	0	0	0
Intern Credentials	0	0	0
District Interns	0	0	0
Working Outside Subject	0	0	0
Total Teachers	27	28	30
Average Years Teaching	13.0	10.7	10.7
Average Years in District	11.7	9.9	9.1

Monte Vista Elementary School supports efforts made by teachers and other certificated school staff in attaining additional education and training through local colleges and universities for their personal growth, as well as for the benefit of the school. During the 2001-02 school year, certificated staff consisted of 32 employees: 43.8 percent with 30+ additional units beyond their bachelor's degree and 37.5 percent holding advanced graduate degrees, such as a masters or doctorate degree.

Teacher Evaluation

A constructive evaluation process promotes quality instruction and is a fundamental element in a sound educational program. Evaluations and formal observations are designed to encourage common goals and to comply with the state's evaluation criteria and district policies. Temporary, probationary, and non-credentialed teachers are evaluated annually. Permanent teachers are evaluated every other year. Provisions exist for qualified tenured teachers who meet specific criteria to be evaluated every third year. Evaluations are conducted by the principal and assistant principal. These administrators have been trained and certified for competency to perform teacher evaluations.

Evaluation criteria in the Glendale Unified School District Standards for Educators include:

- Engaging All Students In The Learning Process
- Understanding and Organizing Content Knowledge for Student Learning
- Assessing Student Learning To Determine Instruction
- Creating and Maintaining an Effective Environment for Student Learning
- Planning Instruction and Designing Effective Learning Experiences for All Students
- Developing as a Professional Educator
- Fulfilling Professional Responsibilities

Substitute Teachers

Glendale Unified School District has not experienced problems retaining substitute teachers. On rare occasions when a substitute teacher is not available for an absent teacher, credentialed staff or administrators take the role of the substitute. Substitute teachers must hold a Bachelor's degree and have successfully passed the California Basic Educational Skills Test. A pool of over 300 qualified substitutes is available to Glendale's schools.

Training & Curriculum Development

The Glendale Unified School District provides high-quality professional development to promote powerful teaching and learning. Professional development in the district focuses on standards-based instruction and strategies to promote literacy and critical thinking skills in all subject areas. There is also an emphasis on using data effectively to plan instruction and working collaboratively to improve instruction by analyzing student work. The district schedules three staff development days annually.

Throughout Glendale Unified School District's elementary schools, curricula in all of the core content areas have been aligned with the state standards, and a standards-based grading and reporting system has been adopted. The Glendale Unified School District adopted new materials in science, grades K-6, during the 2000-01 school year. Implementation of the curriculum for the science adoption continued during the 2001-02 school year.

Monte Vista Elementary School Curriculum Study Committees meet regularly to review course content in the various subject areas, recommend the adoption of new courses and textbooks, and discuss methods of assessing student progress.

To ensure that curriculum is implemented in the most effective manner, the school and the district provide teachers with opportunities to acquire needed knowledge, upgrade skills, and develop professionally. Monte Vista Elementary School prepares a staff development plan that is aligned with district strategic targets, and which uses a variety of resources to assist teachers in refining instructional practice. During the 2001-02 school year, staff development focused on the development of Learning Communities. Learning Communities are used by schools to share ideas and strategies for reaching, providing teachers a supportive environment, and creating an atmosphere of shared values and visions. Four Learning Community teams have been created across all grade levels at Monte Vista Elementary School to enhance instruction and review student work.

Monte Vista Elementary School participates in district and school inservices that are based on research and established learning theories. Staff members build teaching skills and content knowledge by participating in many conferences and workshops throughout the year and then sharing their experiences and knowledge with district colleagues. Monte Vista Elementary School further supports teachers and paraprofessionals by participating in the following district programs:

- The Peer Assistance and Review (PAR) program utilizes Consulting Teachers to help veterans to refine subject matter knowledge and instructional strategies.

During the 2001-02 school year, over 150 new teachers and paraprofessionals participated in these the following programs:

- The Beginning Teacher Support and Assessment (BTSA) program is a two-year program that provides ongoing support from Consulting Teachers, with an emphasis on formative assessment and reflection. All activities are based on the California Standards for the Teaching Profession.
- The Pre-Intern Program prepares teachers not yet credentialed to demonstrate mastery of subject matter competencies.

- The Paraprofessional Teacher Training Program (PTTP) offers opportunities for teacher preparation and certification to education assistants. This program sponsors enrollment in required university courses and provides peer support and training.

Specialized Instruction

Glendale Unified School District’s emphasis is on a well-balanced and rigorous core curriculum at all grade levels. Instructional programs are aligned with state and district standards. The district structures its educational program so that all students receive instruction appropriate to their learning level. Teachers use a variety of instructional techniques and supplemental instructional materials and programs to ensure the success of every student.

Glendale Unified School District recognizes that students with special gifts and talents need more challenging curriculum and instruction. The District’s Gifted and Talented Education (GATE) program is offered to students capable of high levels of achievement. Students in the GATE program receive differentiated instruction in their classrooms. In addition to district-sponsored GATE activities, Monte Vista Elementary School provides after school activities for GATE students.

Monte Vista Elementary School offers assistance and specialized instruction to students with special needs. The school uses research-based programs to provide targeted assistance to students falling below grade level. The school offers intervention programs to enhance students’ understanding and mastery in Language Arts and Math. Students in grades K-6 may participate in the Summer Academy, a districtwide program that provides additional learning opportunities for students having difficulty achieving grade level performance.

English Language Development instruction is available within the classrooms and in special weekly classes for English Language Learners. English Learners receive instruction in both reading skills and verbal skills.

The district’s Special Education Program addresses the needs of those students with special needs through appropriate assessment, identification of problems areas, placement, and program implementation. The director of special education administers the program of the district and assigns a teacher specialist and a special coordinator to support the school principal and teachers. The director is also available to answer any questions and provide support to the principal and teachers. All work together to ensure that the needs of special students are being met.

School Leadership

Leadership at Monte Vista Elementary School is a responsibility shared between district administration, the principal, assistant principal, school administration, instructional staff, students, and parents. The school’s Leadership Team, comprised of teachers, classified staff, representatives from Special Education, the principal and assistant principal, meets regularly to discuss school policies and operations. Teachers also meet by grade level and as part of Learning Communities to develop instructional plans and implement curriculum.

Staff members and parents participate on various committees that make decisions regarding the priorities and direction of the educational plan to ensure instructional programs are consistent with students’ needs and comply with district goals.

- School Site Council
- Monte Vista Foundation
- Parent Teachers Association
- Leadership Team
- Technology Team
- Literacy Team
- Learning Communities
- Student Study Teams
- Individual Education Plan (IEP) Teams
- Individual Intervention Learning Program (IILP)

The School Site Council, consisting of school staff and parents, is a major governing body that meets regularly to address programs and components that make up the school, to discuss the effectiveness and appropriateness of the various programs and components relative to the goals of the school, and to act as a communication liaison between the community and the school.

Monte Vista Elementary School staff and administrators worked with the district in the spring of 2002 to revise the district’s strategic plan, Glendale Schools 2005. The plan articulates the district’s goals and values for all schools. Elements of the plan include: Standards, Assessments, and Accountability; Teaching and Learning; Professional Development; Connections and Communication; Leadership, Governance, and Finance; and School Climate, Safety, and Facilities.

Expenditures & Services Funded

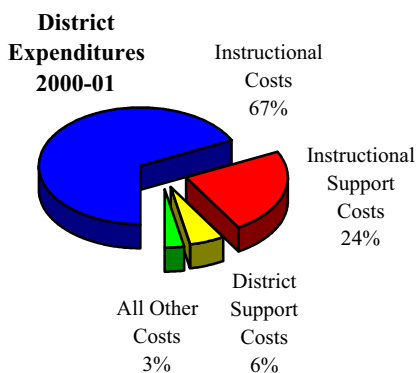
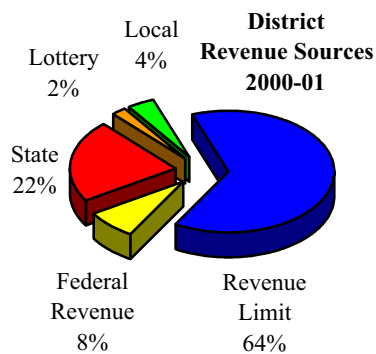
For the 2000-01 school year, Glendale Unified School District spent an average of \$6,143 to educate each student (based on 2000-01 audited financial statements). The figures shown in the table below reflect the direct cost of educational services, per ADA, excluding food services, facilities acquisition and construction, and certain other expenditures. This calculation is required by law annually and compared with other districts statewide.

Current Expense of Education Per Student*		
2000-01		
Statewide Average		
Glendale USD	All Unified Districts	All Districts
\$6,143	\$6,414	\$6,360

*Ed-Data and California Department of Education, School Fiscal Services Division - J-200 Reports.

In addition to general fund state funding, Glendale Unified School District receives state and federal categorical funding for special programs. For the 2000-01 school year, the district received approximately \$1,414 per student in federal and state aid for the following categorical, special education, and support programs:

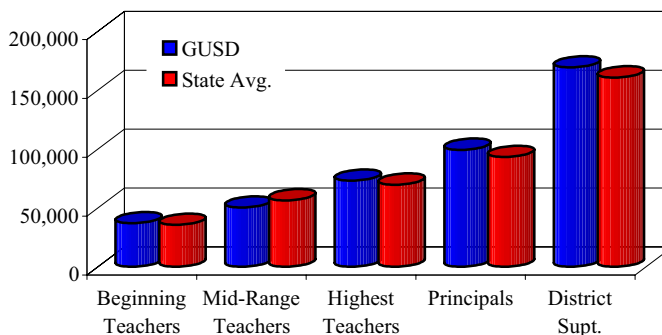
- Special Education
- Drug/Alcohol/Tobacco Education
- Home-to-School Transportation
- Economic Impact Aid
- Instructional Materials
- Year Round School Incentive
- Healthy Start
- Tenth Grade Counseling
- Vocational & Applied Technology
- School Based Coordination Program
- Educational Technology Assistance Grants
- EESA/Math & Science
- Gifted & Talented Pupils
- School Improvement Program
- Reading & Math Programs
- Staff Development
- Class Size Reduction
- Peer Assistance and Review



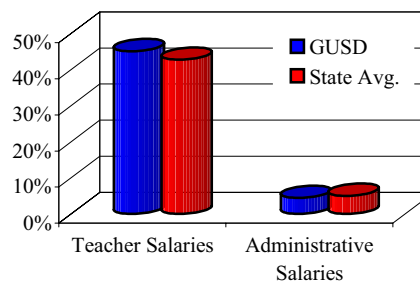
Salary & Budget Comparison

State law requires comparative salary and budget information to be reported to the general public. For comparison purposes, the State Department of Education has provided average salary data from school districts having greater than 20,000 average daily attendance throughout the state.

Average Salary Information Teachers - Principals - Superintendent 2000-01



Average Salary Information Teachers & Administrative Salary Percentages 2000-01



Contact Information

Parents who wish to participate in Monte Vista Elementary School's leadership teams, school committees, school activities, or become volunteers may contact Principal Sharon Popolo or Assistant Principal Carla Walker at (818) 248-2617.